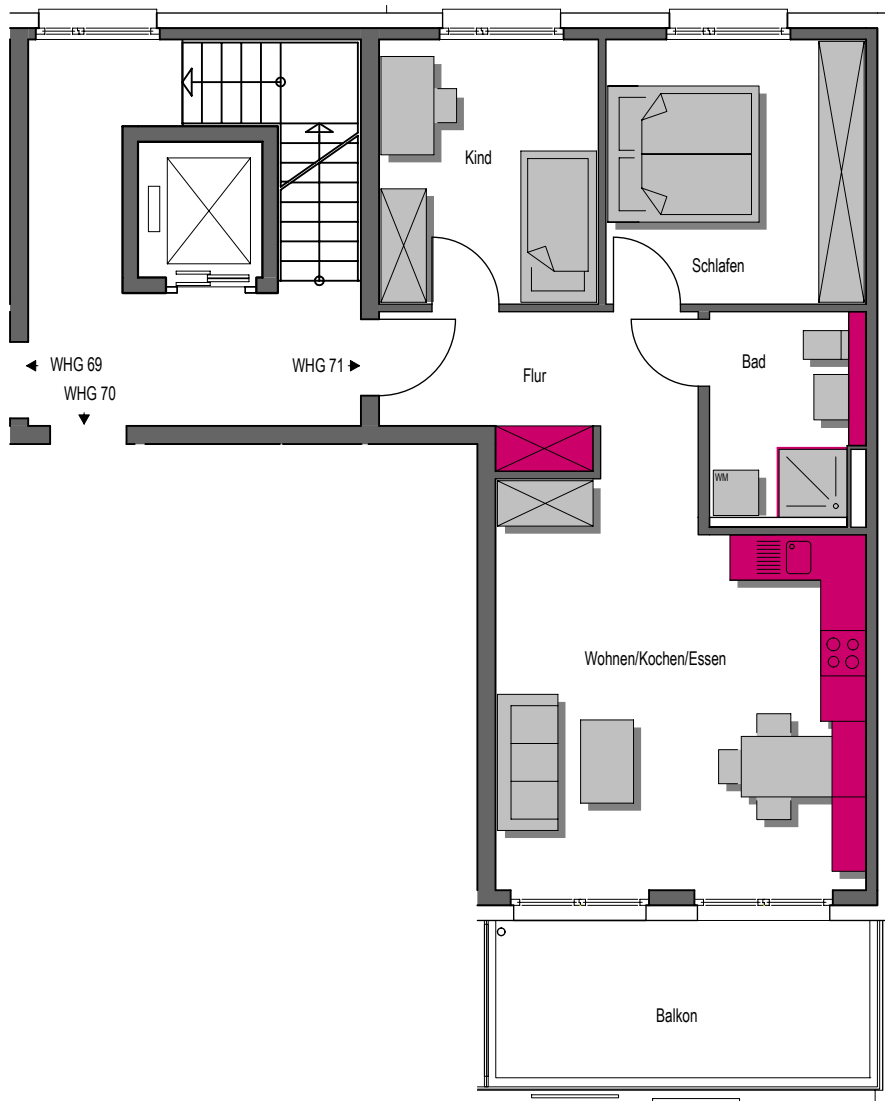
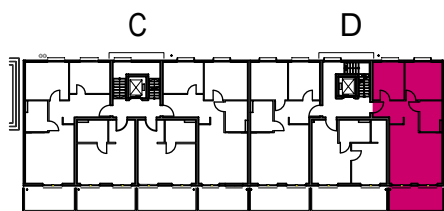


## Mehrfamilienhaus D Grundriss WE 71



|                          |                           |
|--------------------------|---------------------------|
| 1.Obergeschoss           | 3 Zi. Wohnung             |
| Wohnen/Essen/Kochen      | 25,92m <sup>2</sup>       |
| Schlafen                 | 12,04m <sup>2</sup>       |
| Kind I                   | 10,15m <sup>2</sup>       |
| Bad                      | 5,39m <sup>2</sup>        |
| Flur                     | 7,15m <sup>2</sup>        |
| Balkon 50%               | 5,68m <sup>2</sup>        |
| <b>Wohnfläche gesamt</b> | <b>66,33m<sup>2</sup></b> |

### Übersichtsplan



1:100

