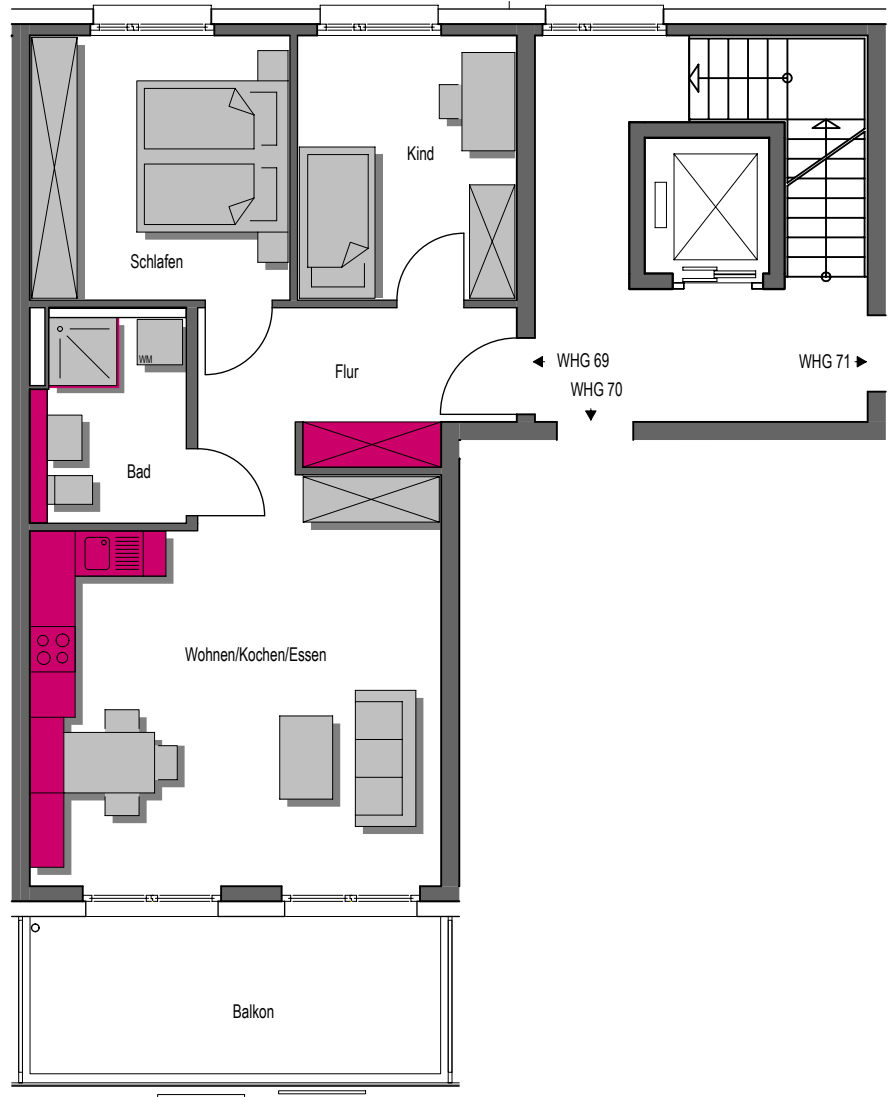
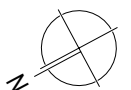
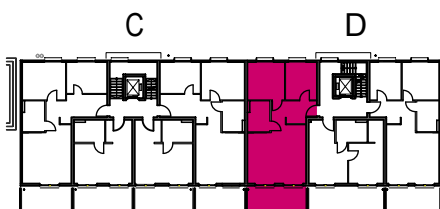


1. Obergeschoss	3 Zi. Wohnung
Wohnen/Essen/Kochen	28,85m ²
Schlafen	12,04m ²
Kind	10,15m ²
Bad	5,39m ²
Flur	7,47m ²
Balkon 50%	6,25m ²
Wohnfläche gesamt	70,15m²



Übersichtsplan



1:100

