

## NAUHEIM

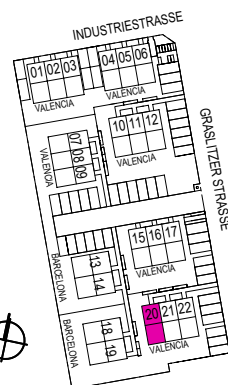
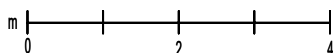
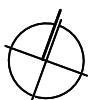
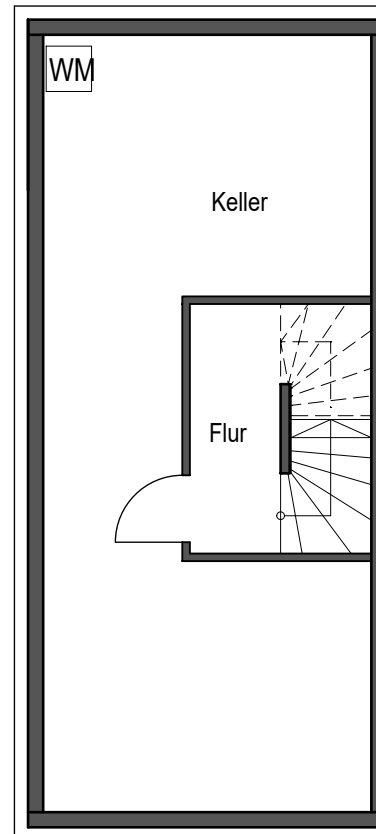
GRASLITZER STRASSE

Neubau von 18 Reiheneigenheimen und 4 Doppelhaushälften

## GRUNDRISS REIHENEIGENHEIM 20 TYP VALENCIA

### Untergeschoss

|                                |                            |
|--------------------------------|----------------------------|
| Flur                           | 3.96 m <sup>2</sup>        |
| <b>WF Untergeschoss gesamt</b> | <b>3.96 m<sup>2</sup></b>  |
| Keller                         | 36.12 m <sup>2</sup>       |
| <b>Nutzfläche gesamt</b>       | <b>36.12 m<sup>2</sup></b> |



## NAUHEIM

GRASLITZER STRASSE

Neubau von 18 Reiheneigenheimen und 4 Doppelhaushälften

## GRUNDRISS REIHENEIGENHEIM 20 TYP VALENCIA

### Erdgeschoss

|                           |                            |
|---------------------------|----------------------------|
| Flur                      | 2.74 m <sup>2</sup>        |
| Garderobe                 | 2.95 m <sup>2</sup>        |
| Küche                     | 6.82 m <sup>2</sup>        |
| WC                        | 2.24 m <sup>2</sup>        |
| Wohnen/Essen              | 26.35 m <sup>2</sup>       |
| Terrasse 50%              | 6.16 m <sup>2</sup>        |
| <b>Erdgeschoss gesamt</b> | <b>47.26 m<sup>2</sup></b> |

### Obergeschoss

|                            |                            |
|----------------------------|----------------------------|
| Bad                        | 7.48 m <sup>2</sup>        |
| Schlafen                   | 15.02 m <sup>2</sup>       |
| Flur                       | 3.20 m <sup>2</sup>        |
| Zimmer 1                   | 11.52 m <sup>2</sup>       |
| Abst.                      | 3.33 m <sup>2</sup>        |
| <b>Obergeschoss gesamt</b> | <b>40.55 m<sup>2</sup></b> |

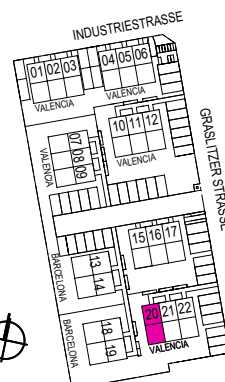
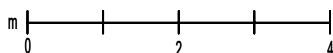
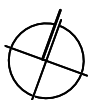
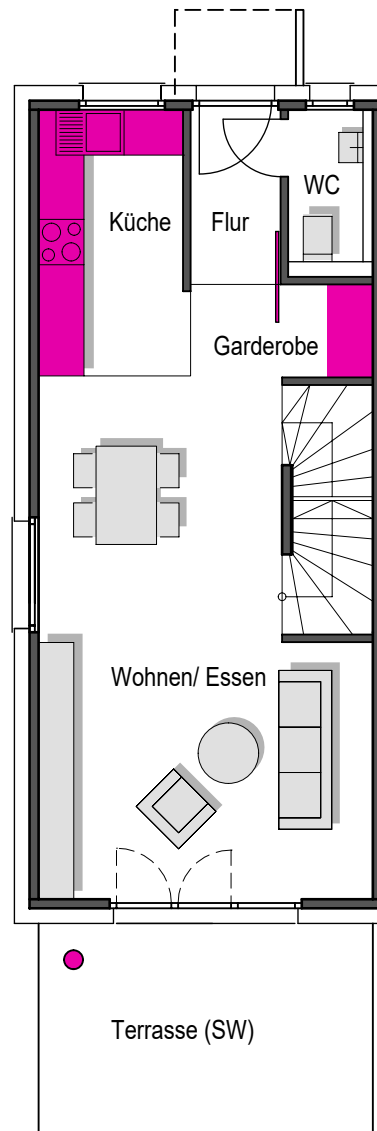
### Dachgeschoss

|                            |                            |
|----------------------------|----------------------------|
| Galerie                    | 15.84 m <sup>2</sup>       |
| Hobbyraum                  | 10.47 m <sup>2</sup>       |
| <b>Dachgeschoss gesamt</b> | <b>26.31 m<sup>2</sup></b> |

### Untergeschoss

|                                |                           |
|--------------------------------|---------------------------|
| Flur                           | 3.96 m <sup>2</sup>       |
| <b>WF Untergeschoss gesamt</b> | <b>3.96 m<sup>2</sup></b> |

**Wohnfläche Reiheneigenheim - Typ Valencia 118.08m<sup>2</sup>**



## NAUHEIM

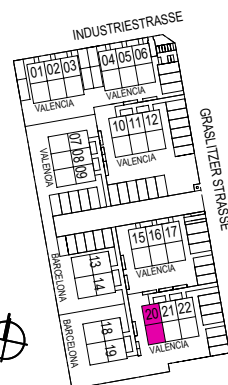
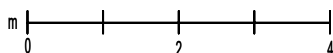
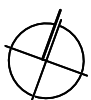
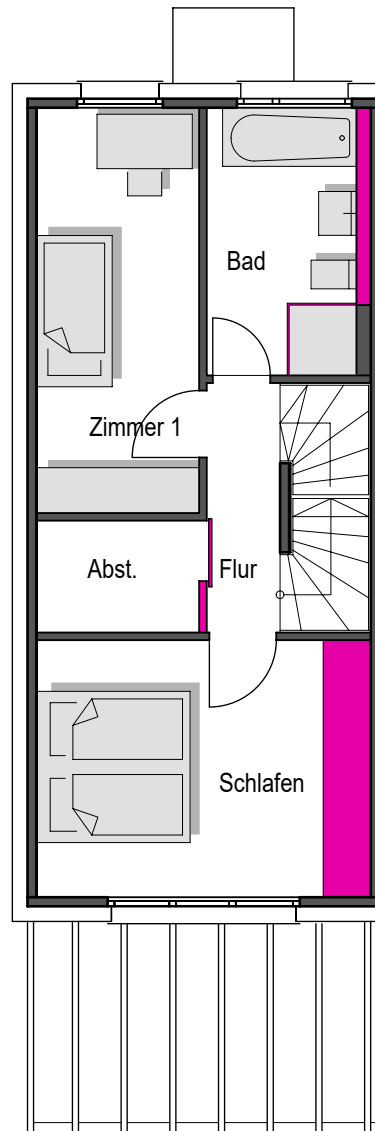
GRASLITZER STRASSE

Neubau von 18 Reiheneigenheimen und 4 Doppelhaushälften

## GRUNDRISS REIHENEIGENHEIM 20 TYP VALENCIA

### Obergeschoss

|                            |                            |
|----------------------------|----------------------------|
| Bad                        | 7.48 m <sup>2</sup>        |
| Schlafen                   | 15.02 m <sup>2</sup>       |
| Flur                       | 3.20 m <sup>2</sup>        |
| Zimmer 1                   | 11.52 m <sup>2</sup>       |
| Abst.                      | 3.33 m <sup>2</sup>        |
| <b>Obergeschoss gesamt</b> | <b>40.55 m<sup>2</sup></b> |



## NAUHEIM

GRASLITZER STRASSE

Neubau von 18 Reiheneigenheimen und 4 Doppelhaushälften

## GRUNDRISS REIHENEIGENHEIM 20 TYP VALENCIA

### Dachgeschoss

|                            |                            |
|----------------------------|----------------------------|
| Galerie                    | 15.84 m <sup>2</sup>       |
| Hobbyraum                  | 10.47 m <sup>2</sup>       |
| <b>Dachgeschoss gesamt</b> | <b>26.31 m<sup>2</sup></b> |

