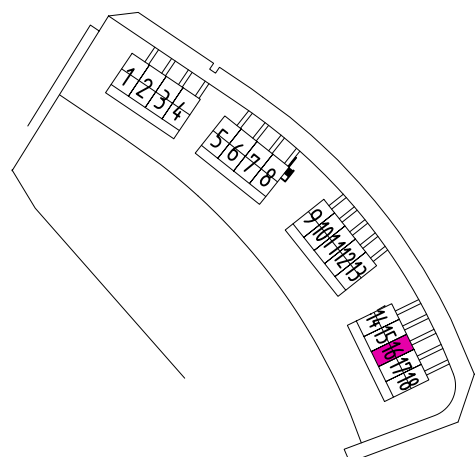
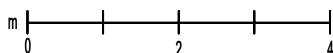
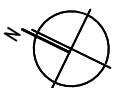
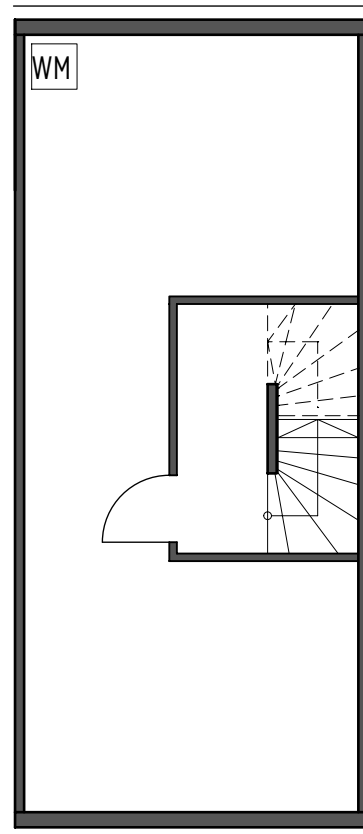


**WEINSBERG**  
HEILBRONNER WEG  
Neubau von 18 Reiheneigenheimen

**GRUNDRISS**  
**REIHENEIGENHEIM 16**  
**TYP VALENCIA**

Untergeschoss

Flur	3.96 m <sup>2</sup>
WF Untergeschoss gesamt	3.96 m <sup>2</sup>
Keller	36.12 m <sup>2</sup>
Nutzfläche gesamt	36.12 m <sup>2</sup>



## WEINSBERG

HEILBRONNER WEG  
Neubau von 18 Reiheneigenheimen

## GRUNDRISS REIHENEIGENHEIM 16 TYP VALENCIA

### Erdgeschoss

Flur	2.74 m <sup>2</sup>
Garderobe	2.95 m <sup>2</sup>
Küche	6.82 m <sup>2</sup>
WC	2.24 m <sup>2</sup>
Wohnen/Essen	26.35 m <sup>2</sup>
Terrasse 50%	6.16 m <sup>2</sup>
<b>Erdgeschoss gesamt</b>	<b>47.26 m<sup>2</sup></b>

### Obergeschoss

Bad	7.48 m <sup>2</sup>
Schlafen	15.02 m <sup>2</sup>
Flur	3.20 m <sup>2</sup>
Zimmer 1	11.52 m <sup>2</sup>
Abst.	3.33 m <sup>2</sup>
<b>Obergeschoss gesamt</b>	<b>40.55 m<sup>2</sup></b>

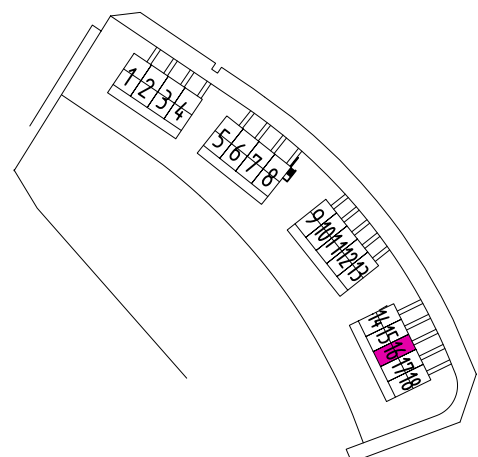
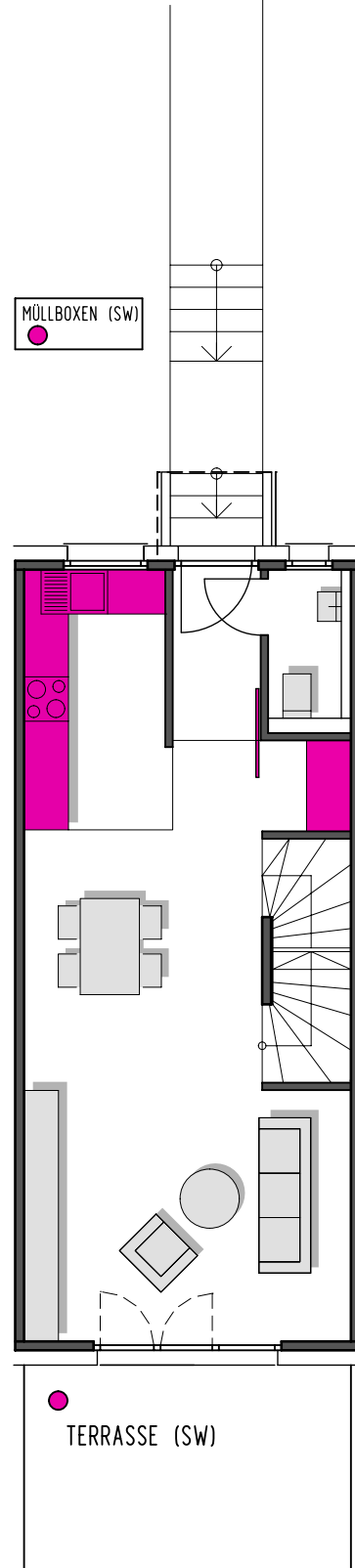
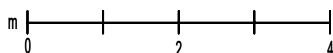
### Dachgeschoss

Galerie	10.96 m <sup>2</sup>
Hobbyraum	15.64 m <sup>2</sup>
Terrasse DG (50%, SW)	7.11 m <sup>2</sup>
<b>Dachgeschoss gesamt</b>	<b>33.71 m<sup>2</sup></b>

### Untergeschoss

Flur	3.96 m <sup>2</sup>
<b>WF Untergeschoss gesamt</b>	<b>3.96 m<sup>2</sup></b>

Wohnfläche Reiheneigenheim - Typ Valencia 125.48m<sup>2</sup>

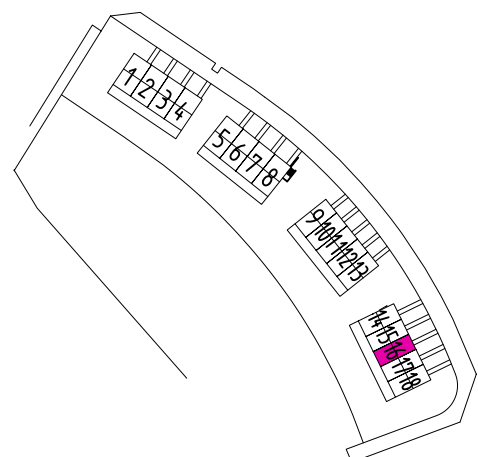
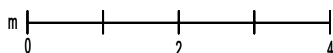
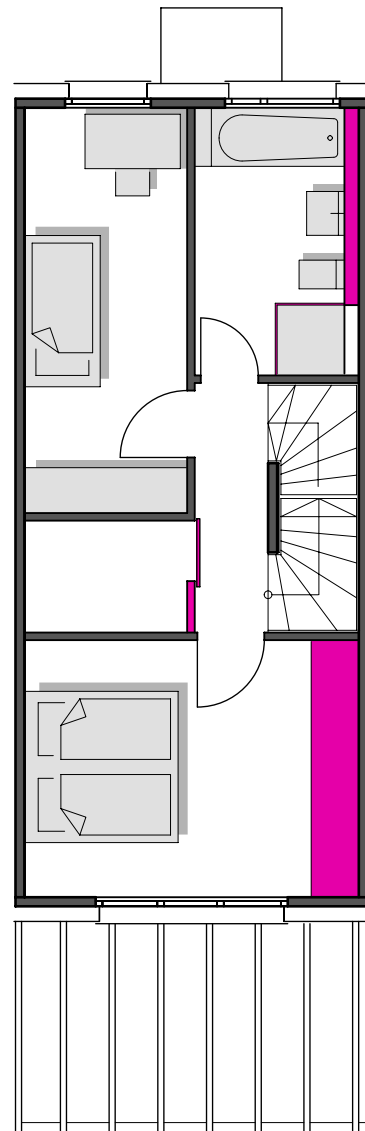


**WEINSBERG**  
HEILBRONNER WEG  
Neubau von 18 Reiheneigenheimen

**GRUNDRISS**  
**REIHENEIGENHEIM 16**  
**TYP VALENCIA**

Obergeschoss

Bad	7.48 m <sup>2</sup>
Schlafen	15.02 m <sup>2</sup>
Flur	3.20 m <sup>2</sup>
Zimmer 1	11.52 m <sup>2</sup>
Abst.	3.33 m <sup>2</sup>
<b>Obergeschoss gesamt</b>	<b>40.55 m<sup>2</sup></b>

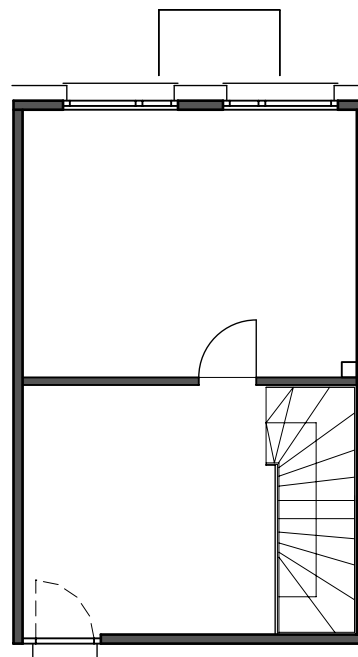


**WEINSBERG**  
HEILBRONNER WEG  
Neubau von 18 Reiheneigenheimen

**GRUNDRISS**  
**REIHENEIGENHEIM 16**  
**TYP VALENCIA**

Dachgeschoss

Galerie	10.96 m <sup>2</sup>
Hobbyraum	15.64 m <sup>2</sup>
Terrasse DG (50%, SW)	7.11 m <sup>2</sup>
Dachgeschoss gesamt	33.71 m <sup>2</sup>



●  
DACHTERRASSE (SW)

