

GRUNDRISS

WE 36

3. Obergeschoss

2 Zi.-Whg.

Wohnen/Küche

26,63 m²

Schlafen

19,79 m²

Bad

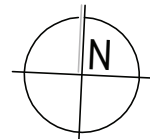
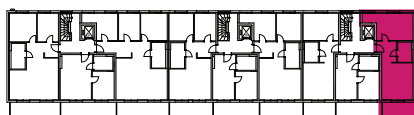
5,30 m²

Balkon 50 %

4,17 m²

ges. Wohnfläche

55,89 m²



M. 1:100

0 0,5 1,0 2,5 5,0