

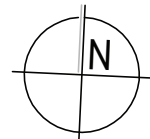
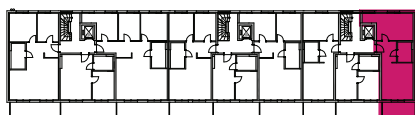
## GRUNDRISS

## WE 30

### 1. Obergeschoss

### 2 Zi.-Whg.

Wohnen/Küche	26,63 m <sup>2</sup>
Schlafen	19,79 m <sup>2</sup>
Bad	5,30 m <sup>2</sup>
Balkon 50 %	4,17 m <sup>2</sup>
<b>ges. Wohnfläche</b>	<b>55,89 m<sup>2</sup></b>



M. 1:100

0 0,5 1,0 2,5 5,0