

# BAUSTOLZ

EIN HAUS. EIN PREIS.

MERING  
Geßweinstraße 3  
Neubau Mehrfamilienhaus + TG

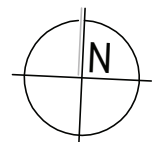
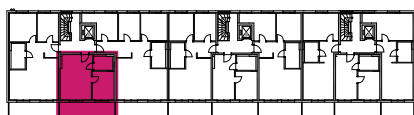
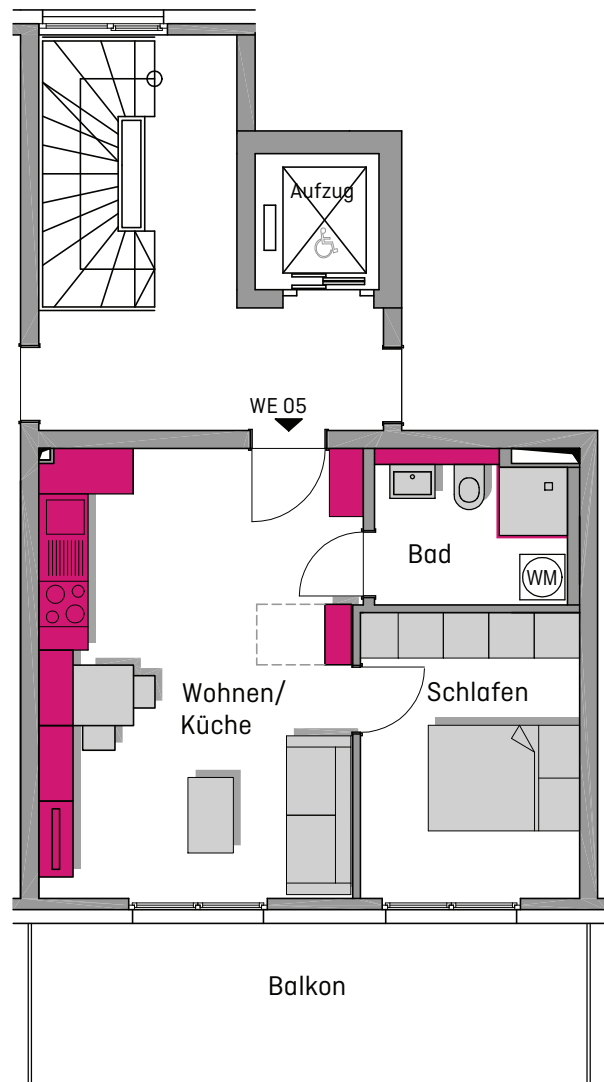
## GRUNDRISS

WE 05

1. Obergeschoss

2 Zi.-Whg.

|                        |                            |
|------------------------|----------------------------|
| Wohnen/Küche           | 24,70 m <sup>2</sup>       |
| Schlafen               | 10,96 m <sup>2</sup>       |
| Bad                    | 5,30 m <sup>2</sup>        |
| Balkon 50 %            | 7,10 m <sup>2</sup>        |
| <b>ges. Wohnfläche</b> | <b>48,06 m<sup>2</sup></b> |



M. 1:100

0 0,5 1,0 2,5 5,0